



# Best Practice

*UK Trip 2006*



**NAYLOR LOVE**  
CONSTRUCTION SINCE 1910

# Venetian Project, Macao



- ◆ \$4b Project
- ◆ 8,000 staff
- ◆ Subject to change

# T5 - Heathrow, London



- ◆ £4b project
- ◆ £5m fire stop
- ◆ £80m retail fit out
- ◆ 2½ yrs to turn a sod
- ◆ Sophisticated client
- ◆ Alliance style project

# T5 - Heathrow, London



- ◆ Top communication
- ◆ Purest collaboration
- ◆ Production planning
- ◆ Constraints analysis
- ◆ 4D Planning

# Wembley Stadium

- ◆ Graphic comparison with T5
- ◆ \$63m dispute with Steel Contractor
- ◆ 24/7 with no logical planning
- ◆ Major activities now out of sequence
- ◆ Conflicts, compromises, low productivity
- ◆ Huge Company threatening losses

# What's gone wrong?

- ◆ We can guess!
- ◆ Guide knew little about the project
- ◆ Poor production & no buzz
- ◆ Few smiles
- ◆ No pride
- ◆ Suspect little collaboration
- ◆ Lawyer's poised for action.

# Cranes for Africa

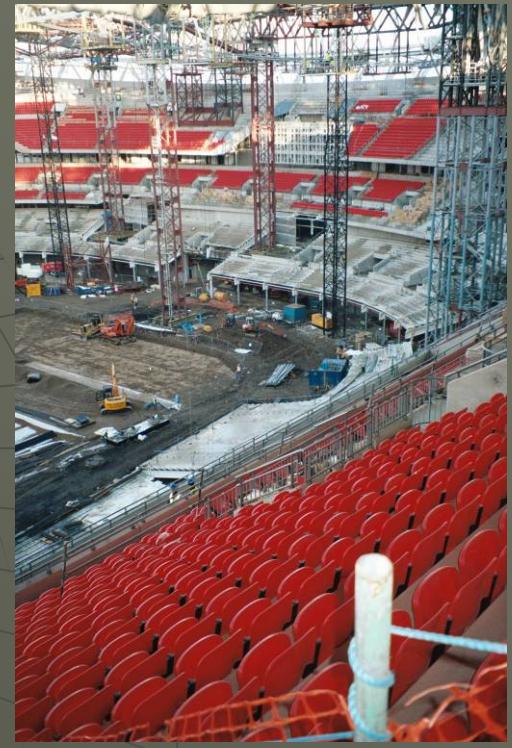


But wait, there's more!





# Where's Wally?



It's a Jungle out there!

